

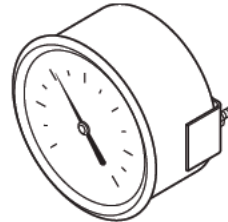
# 2422 Series

## Receiver Gauges

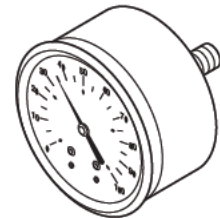
Receiver gauges for continuous indication of temperature, differential static pressure, differential pressure, pressure, enthalpy, or humidity in conjunction with a transmitter-receiver system. Select "donut" type dials listed for required application.

**Features:**

- Receiver-gauges receive output signals of pneumatic transmitters and provide readout of measured (and/or controlled) variables at convenient locations.
- Gauge dials available to match each pneumatic transmitter range.
- 2 in. model available for stem mounting.
- 2-1/2 and 3-1/2 in. models available for flush mounting.



2422-001, -002



2422-003

### Model Chart

Model No.	Replaces Model No.	Dial Size In.	Pointer	Mounting	Air Connection	Construction and Finish
2422-001 <sup>a b</sup>	A251-1	2-1/2	Adjustable	Flush with "U" clamp for panels	1/8 in. MNPT center back	Black plastic case with chrome plated snap-out ring
2422-002 <sup>a c</sup>	A252	3-1/2				
2422-003 <sup>a d</sup>	A253-12	2		Stem		Black plastic case

- <sup>a</sup> Each gauge kit includes a gauge and a gauge overlay kit.
- <sup>b</sup> To replace 2-1/2 in. gauge overlays, order overlay kit 2890-002.
- <sup>c</sup> To replace 3-1/2 in. gauge overlays, order overlay kit 2890-003.
- <sup>d</sup> To replace 2 in. gauge overlays, order overlay kit 2890-001.

### Gauge Overlay Kits (included with gauge).

2890-001	2890-002	2890-003
Overlay Kit for 2" Dia. 2422-003 Gauges	Overlay Kit for 2-1/2" Dia. 2422-002 Gauges	Overlay Kit for 3-1/2" Dia. 2422-001 Gauges
Blank <sup>a</sup>	Blank <sup>a</sup>	Blank <sup>a</sup>
0 to 200°F	0 to 200°F	0 to 200°F
25 to 125°F	25 to 125°F	25 to 125°F
40 to 100°F	40 to 100°F	40 to 100°F
3 to 15 psig	3 to 15 psig	3 to 15 psig
40 to 140°F	0 to 100°F	0 to 100°F
40 to 240°F	40 to 140°F	40 to 140°F
-40 to 160°F	40 to 240°F	40 to 240°F
-25 to 125°F	-40 to 160°F	-40 to 160°F
50 to 90°F	-25 to 125°F	-25 to 125°F
62.5 to 92.5°F 30% to 80% RH	50 to 90°F	50 to 90°F
0 to 3 in. WC	62.5 to 92.5°F	62.5 to 92.5°F
0 to 10 in. WC	30% to 80% RH	30% to 80% RH
50 to 100°F	0 to 3 in. WC 0 to 10 in. WC 50 to 100 in. WC	0 to 3 in. WC
		0 to 10 in. WC
		50 to 100°F

<sup>a</sup> Five majors with nine minors per major can be field customized

Specifications	
Air pressure	3 to 15 psig (21 to 103 kPa).
Construction	
Case	Refer to Model Chart.
Lens	Clear plastic.
Gauge actuation	Bronze Bourdon tube through sturdy brass gears.
Gauge dimensions	
2422-001	2-29/32 (74 mm) dia. x 2-1/2 (64 mm) D in.
2422-002	4 (102 mm) dia. x 2-1/2 (64 mm) D in.
2422-003	2-15/64 (57 mm) dia. x 1-53/64 (46 mm) D in.

Typical Applications

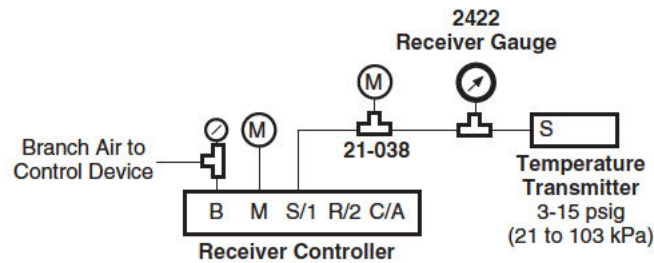


Figure 1 Typical Application.

Notes:

Receiver-Gauges may be connected at any point in the line between the transmitter and the receiver-controller (i.e., on either side of the restrictor-tee). More than one receiver-gauge may be connected to the same line if required.